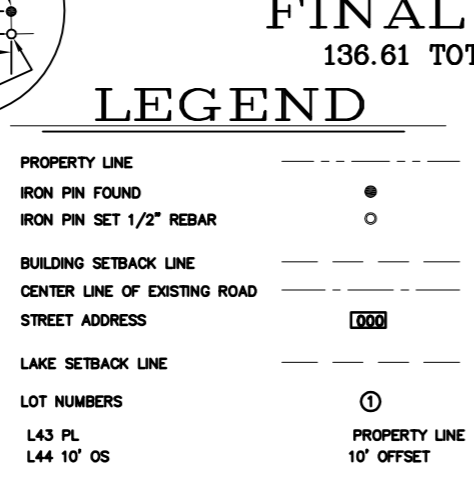


LINE TABLE			CURVE TABLE			
LINE	LENGTH	BEARING	CURVE	LENGTH	RADIUS	CHORD DIR.
L1	102.82	N89°14'55"W				
L2	179.18	S89°18'58"E				
L3	207.11	S89°18'58"E				
L4	328.69	N89°18'13"W				
L5	198.52	S89°17'16"E	C5	537.76	695.93	N44°14'19"W
L6	41.31	S46°16'23"W	C6	79.21	313.38	S61°07'50"E
L7	77.34	N70°26'37"W	C7	118.87	313.47	S42°22'28"E
L8	82.82	N23°41'48"E	C8	171.18	306.88	S15°06'01"E
L9	201.87	N41°50'08"W	C9	30.01	305.00	S03°44'53"W
L10	149.35	S71°14'11"E	C10	30.21	321.18	S09°20'12"W
L11	91.94	N46°18'57"E	C11	60.98	308.19	S18°00'07"W
L12	149.35	S71°14'11"E	C12	74.09	1030.00	S25°45'27"W
L13	199.48	N41°50'08"W	C13	286.91	1030.00	S35°47'54"W
L14	262.29	N76°45'09"E	C14	44.83	30.00	N00°58'17"E
L15	303.94	N76°45'09"E	C15	183.70	470.00	N53°01'57"W
L16	152.18	N76°45'09"E	C16	57.48	470.00	N67°43'58"W
L17	34.85	N88°44'09"E	C17	26.09	30.00	S83°51'09"W
L18	88.06	N88°44'09"E	C18	55.65	63.00	N84°14'56"E
L19	18.21	N88°44'09"E	C19	59.82	63.00	S43°14'23"E
L20	104.70	N88°44'09"E	C20	66.91	63.00	S14°23'22"W
L21	31.15	N76°45'09"E	C21	100.61	63.00	N89°26'05"W
L22	31.15	N76°45'09"E	C22	24.49	63.00	N32°32'57"W
L23	300.53	N76°45'09"E	C23	26.09	30.00	S46°19'31"E
L24	82.82	S23°41'48"W	C24	159.48	530.00	N62°36'58"W
L25	189.63	S87°05'05"E	C25	112.49	530.00	N47°54'57"W
L26	59.79	N75°21'35"E	C26	46.02	30.00	S85°46'59"E
L27	236.08	N41°15'30"E	C27	224.00	1030.00	S56°29'59"W
L28	54.19	N41°15'30"E	C28	220.82	1030.00	S68°52'17"W
L29	137.95	N41°15'30"E	C29	31.27	1030.00	S75°52'58"W
L30	152.32	S41°15'30"W	C30	110.85	530.00	S82°44'39"W
L31	59.79	N75°21'35"E	C31	26.09	30.00	N63°49'29"E
L32	68.40	S00°41'20"W	C32	77.50	63.00	S74°09'20"W
L33	188.64	N89°18'40"W	C33	62.54	63.00	N42°09'56"W
L34	74.66	N00°33'09"W	C34	58.12	63.00	N12°42'06"E
L35	191.42	N00°32'09"E	C35	109.32	63.00	N88°50'42"E
L36	104.17	N00°32'23"E	C36	26.09	30.00	N66°21'11"W
L37	198.71	N00°32'23"E	C37	98.30	470.00	S82°44'39"W
L38	63.38	N00°32'23"E	C38	110.29	970.00	S73°29'43"W
L39	70.27	N00°32'23"E	C39	31.88	970.00	S69°17'48"W
L40	49.73	N00°32'27"E	C40	30.15	970.00	S87°27'52"W
L41	34.54	N89°23'34"W	C41	439.53	957.34	S53°30'22"W
L42	175.58	N89°17'16"W	C42	286.29	941.01	S32°17'07"W
L43 PL	102.54	N07°35'28"E	C43	360.72	245.00	S18°28'56"E
L44 10' OS	99.81	S13°04'41"W	C44	35.37	240.91	S64°45'14"E
L45 PL	153.99	N40°35'53"E	C45	311.07	755.93	N54°35'11"W
L46 10' OS	153.21	S40°39'47"W	C46	210.87	755.93	N34°48'21"W
L47 PL	94.66	N34°00'47"E	C47	34.55	30.00	S59°48'18"E
L48 10' OS	94.41	S32°35'38"W	C48	32.89	330.00	N89°56'25"W
L49 PL	145.81	N47°36'34"E	C49	44.25	170.00	N82°48'58"E
L50 10' OS	144.01	S48°39'10"W	C50	101.18	170.00	N58°18'33"E
L51 PL	83.95	N36°03'35"E	C51	22.39	25.00	N15°35'58"E
L52 10' OS	84.80	S36°08'01"W	C52	91.06	63.00	S31°20'54"W
L53 PL	146.32	N34°30'41"E	C53	64.33	63.00	N77°59'34"W
L54 10' OS	144.79	S34°39'24"W	C54	81.67	63.00	N11°36'08"W
L55 PL	84.88	N48°50'21"E	C55	73.71	63.00	N59°03'24"E
L56 10' OS	86.20	S48°31'04"W	C56	22.39	25.00	S66°55'02"W
L57 PL	112.91	N34°31'59"E	C57	136.89	230.00	N58°18'33"E
L58 10' OS	108.06	S33°18'48"W				
L59 PL	80.40	N38°18'05"E				
L60 10' OS	86.17	S39°31'41"W				
L61 PL	144.22	N47°44'50"E				
L62 10' OS	145.17	S47°37'31"W				
L63 PL	33.79	N57°54'17"W				
L64 10' OS	43.79	N57°54'17"W				
L65 PL	107.94	S72°37'55"W				
L66 10' OS	105.61	N77°51'21"E				
L67 PL	115.10	S42°01'21"W				
L68 10' OS	120.33	N46°29'42"E	L85 10' OS	27.86		N40°08'54"W
L69 PL	110.43	S62°02'54"W	L86 PL	50.92		S18°49'51"W
L70 10' OS	109.36	N60°23'48"E	L87 10' OS	71.15		S20°10'21"W
A - B	1136.69	N00°35'34"E	L71 PL	90.67		S49°27'03"W
B - C	888.29	N00°25'41"E	L72 10' OS	88.15		N47°04'16"E
C - D	2950.89	S89°23'42"E	L73 PL	150.72		S49°27'03"W
D - E	120.58	S00°21'57"W	L74 10' OS	155.88		N49°39'27"E
E - F	887.40	S00°33'30"W	L75 PL	123.34		S37°06'40"W
F - G	936.60	S00°32'37"W	L76 10' OS	118.16		S37°06'27"W
G - H	74.66	S00°33'09"E	L77 PL	102.48		S55°49'44"W
H - I	579.23	N89°19'03"W	L78 10' OS	98.76		S55°13'01"W
I - J	870.73	N89°17'55"W	L79 PL	138.49		N68°23'51"W
J - K	374.10	N89°17'16"W	L80 10' OS	131.43		N68°23'51"W
K - L	328.69	N89°18'13"W	L81 PL	129.07		N30°30'34"W
L - M	386.29	N89°18'58"W	L82 10' OS	125.17		N30°30'34"W
M - N	365.47	N89°19'55"W	L83 PL	187.09		N30°39'18"W
N - A	47.25	S89°14'55"W	L84 10' OS	170.08		N28°35'15"W

LINE	LENGTH	BEARING	LINE	LENGTH	BEARING	
L43 PL	102.54	N07°35'28"E	C43	360.72	245.00	S18°28'56"E
L44 10' OS	99.81	S13°04'41"W	C44	35.37	240.91	S64°45'14"E
L45 PL	153.99	N40°35'53"E	C45	311.07	755.93	N54°35'11"W
L46 10' OS	153.21	S40°39'47"W	C46	210.87	755.93	N34°48'21"W
L47 PL	94.66	N34°00'47"E	C47	34.55	30.00	S59°48'18"E
L48 10' OS	94.41	S32°35'38"W	C48	32.89	330.00	N89°56'25"W
L49 PL	145.81	N47°36'34"E	C49	44.25	170.00	N82°48'58"E
L50 10' OS	144.01	S48°39'10"W	C50	101.18	170.00	N58°18'33"E
L51 PL	83.95	N36°03'35"E	C51	22.39	25.00	N15°35'58"E
L52 10' OS	84.80	S36°08'01"W	C52	91.06	63.00	S31°20'54"W
L53 PL	146.32	N34°30'41"E	C53	64.33	63.00	N77°59'34"W
L54 10' OS	144.79	S34°39'24"W	C54	81.67	63.00	N11°36'08"W
L55 PL	84.88	N48°50'21"E	C55	73.71	63.00	N59°03'24"E
L56 10' OS	86.20	S48°31'04"W	C56	22.39	25.00	S66°55'02"W
L57 PL	112.91	N34°31'59"E	C57	136.89	230.00	N58°18'33"E
L58 10' OS	108.06	S33°18'48"W				
L59 PL	80.40	N38°18'05"E				
L60 10' OS	86.17	S39°31'41"W				
L61 PL	144.22	N47°44'50"E				
L62 10' OS	145.17	S47°37'31"W				
L63 PL	33.79	N57°54'17"W				
L64 10' OS	43.79	N57°54'17"W				
L65 PL	107.94	S72°37'55"W				
L66 10' OS	105.61	N77°51'21"E				
L67 PL	115.10	S42°01'21"W				
L68 10' OS	120.33	N46°29'42"E	L85 10' OS	27.86		N40°08'54"W
L69 PL	110.43	S62°02'54"W	L86 PL	50.92		S18°49'51"W
L70 10' OS	109.36	N60°23'48"E	L87 10' OS	71.15		S20°10'21"W
A - B	1136.69	N00°35'34"E	L71 PL	90.67		S49°27'03"W
B - C	888.29	N00°25'41"E	L72 10' OS	88.15		N47°04'16"E
C - D	2950.89	S89°23'42"E	L73 PL	150.72		S49°27'03"W
D - E	120.58	S00°21'57"W	L74 10' OS	155.88		N49°39'27"E
E - F	887.40	S00°33'30"W	L75 PL	123.34		S37°06'40"W
F - G	936.60	S00°32'37"W	L76 10' OS	118.16		S37°06'27"W
G - H	74.66	S00°33'09"E	L77 PL	102.48		S55°49'44"W
H - I	579.23	N89°19'03"W	L78 10' OS	98.76		S55°13'01"W
I - J	870.73	N89°17'55"W	L79 PL	138.49		N68°23'51"W
J - K	374.10	N89°17'16"W	L80 10' OS	131.43		N68°23'51"W
K - L	328.69	N89°18'13"W	L81 PL	129.07		N30°30'34"W
L - M	386.29	N89°18'58"W	L82 10' OS	125.17		N30°30'34"W
M - N	365.47	N89°19'55"W	L83 PL	187.09		N30°39'18"W
N - A	47.25	S89°14'55"W	L84 10' OS	170.08		N28°35'15"W

- NOTES:**
- TAX MAP 82 PARCEL NUMBER 30.
  - ZONING IS AGRICULTURAL RESIDENTIAL BUILDING SETBACK FRONT / REAR 50' SIDES 50' POND 75'
  - THIS PROPERTY IS LOCATED AND AS SHOWN ON FEMA FLOOD INSURANCE RATE MAP NO.1301380250C DATED 3/17/1997 AND IS NOT WITHIN A DESIGNATED 100 YEAR FLOOD HAZARD AREA ACCORDING TO THE MAP.
  - THE SURVEYOR WHOSE SEAL IS AFFIXED HERETO DOES NOT GUARANTEE THAT ALL UTILITIES AND EASEMENTS WHICH MAY AFFECT THIS PROPERTY ARE SHOWN.
  - THE FIELD DATA UPON WHICH THIS MAP OR PLAT IS BASED HAS A CLOSURE PRECISION OF ONE FOOT IN 45,221 FEET AND AN ANGULAR ERROR OF 01" PER ANGULAR POINT
  - THIS PLAT HAS BEEN CALCULATED FOR CLOSURE USING THE COMPASS RULE AND IS FOUND TO HAVE AN ACCURACY OF ONE FOOT IN 645,901 FEET.
  - THE LINEAR AND ANGULAR MEASUREMENTS SHOWN ON THIS PLAT WERE OBTAINED BY USING A TOPCON GPT 8201A TOTAL STATION & HIPER XT GPS UNIT.



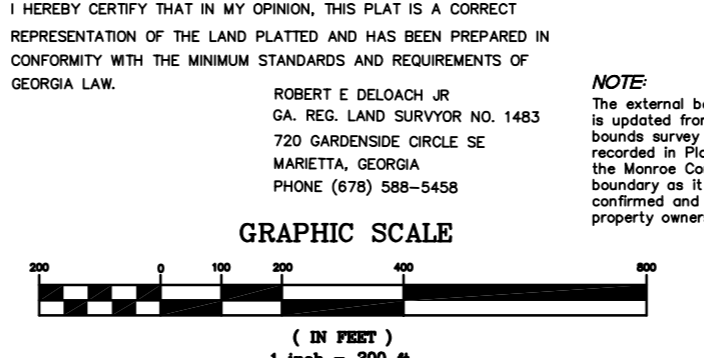
**FINAL PLAT**  
136.61 TOTAL ACRES

**SURVEYOR'S CERTIFICATION**

I HEREBY CERTIFY THAT IN MY OPINION, THIS PLAT IS A CORRECT REPRESENTATION OF THE LAND PLATTED AND HAS BEEN PREPARED IN CONFORMITY WITH THE MINIMUM STANDARDS AND REQUIREMENTS OF GEORGIA LAW.

ROBERT E DELOACH JR  
GA. REG. LAND SURVYOR NO. 1483  
720 GARDENSIDE CIRCLE SE  
MARIETTA, GEORGIA  
PHONE (678) 588-5458

REFERENCE:  
PB 8 / PG 171  
PB 74 / PG 583  
PB 13 / PG 109  
PB 18 / PG 222  
PB 18 / PG 227



**BOUNDARY TRAVERSE**

LINE	LENGTH	BEARING
A - B	1136.69	N00°35'34"E
B - C	888.29	N00°25'41"E
C - D	2950.89	S89°23'42"E
D - E	120.58	S00°21'57"W
E - F	887.40	S00°33'30"W
F - G	936.60	S00°32'37"W
G - H	74.66	S00°33'09"E
H - I	579.23	N89°19'03"W
I - J	870.73	N89°17'55"W
J - K	374.10	N89°17'16"W
K - L	328.69	N89°18'13"W
L - M	386.29	N89°18'58"W
M - N	365.47	N89°19'55"W
N - A	47.25	S89°14'55"W

**WADDESODN**

A SUBDIVISION  
SITUATED, LYING AND BEING IN  
LANDLOT 76 AND 77 13TH LAND DISTRICT  
MONROE COUNTY, GA.

FOR DEVELOPER  
DAVID S. JENKINS  
SEPTEMBER 9, 2006

**NOTE:**  
The external boundary of this subdivision is updated from a rural metes and bounds survey dated Feb. 26, 1993 and recorded in Plat Book 18 Page 222 of the Monroe County public records. The boundary as it is shown herein has been confirmed and accepted by adjacent property owners.